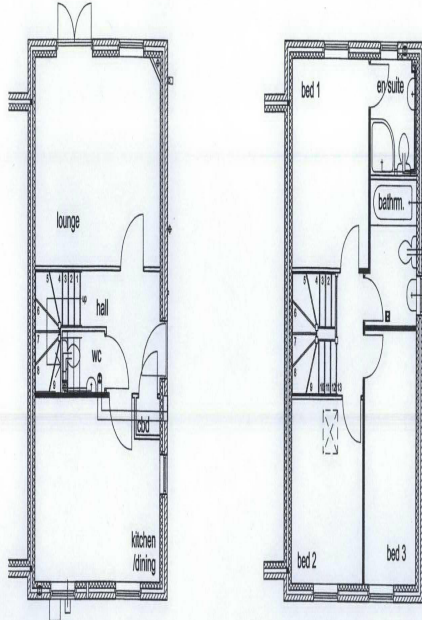


COPYRIGHT H M H ARCHITECTS
 DIMENSIONS NOT TO BE SCALED
 To be read in conjunction with full specification



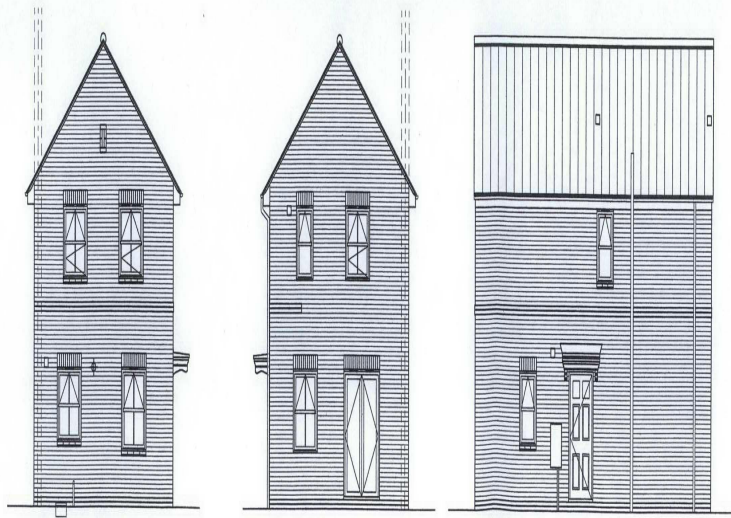
GROUND FLOOR

FIRST FLOOR

FLOOR PLANS

05/32401

STOCKTON BOROUGH COUNCIL
 PLANNING
 21 NOV 2005
 DATE RECEIVED



FRONT ELEVATION

REAR ELEVATION

SIDE ELEVATION

ELEVATIONS

H M H
 ARCHITECTS

26 Enterprise House
 Team Valley, Gateshead
 Tyne & Wear NE11 0SR
 Telephone 0191 4870062
 Facsimile 0191 4826581
 hmh@hmharchitects.co.uk

Project
**DUNELM ACORN HOMES
 PARKFIELD REDEVELOPMENT
 STOCKTON**

Drawing Sheet
CHESTNUT - PLANS & ELEVATIONS

| | | | |
|-----------|-------------|----------------|-------------------|
| By KEI | Check AM | Scale 1:100 | Date SEPT 2005 |
|-----------|-------------|----------------|-------------------|

| | | |
|------------------------|--------------------------------|-----------------|
| Project Number 3765 | Drawing Sheet Number SK-106 | Revision R02 |
|------------------------|--------------------------------|-----------------|

C:\Users\jg\Documents\Projects\Acorn Homes - Parkfield\CH\chestnut-elevations.dwg
 Date plotted: 15/11/2005